



**PRO-CELL CO., LTD.**

---

---

# **SPECIFICATION FOR APPROVAL**

**Customer :**

**Model No. :** OB-001

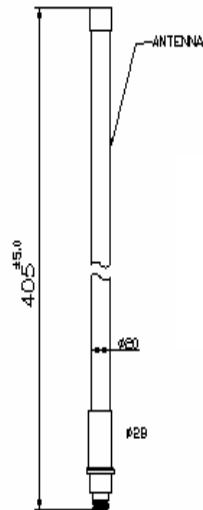
**Description :** 2.4~2.4835GHz OMNI ANTENNA

**Date :** 2006/11/07

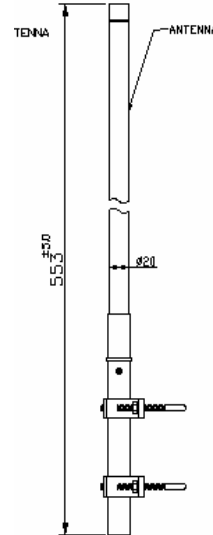
**Rev :** 1



# PRO-CELL CO., LTD.



Antenna



Antenna + mount

## Electrical Specifications:

Frequency Range :	2.4 ~ 2.4835GHz
VSWR :	≤ 2.0
Impedance :	50Ω ± 5Ω
Gain :	7 dBi
Polarization :	Vertical
Power Handling :	10 Watt
Beam Width :	H: 360° / E: 17.5°

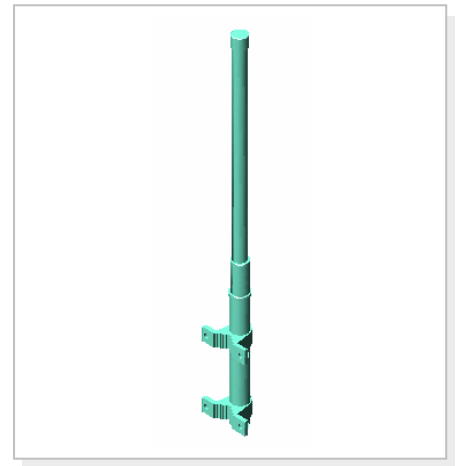
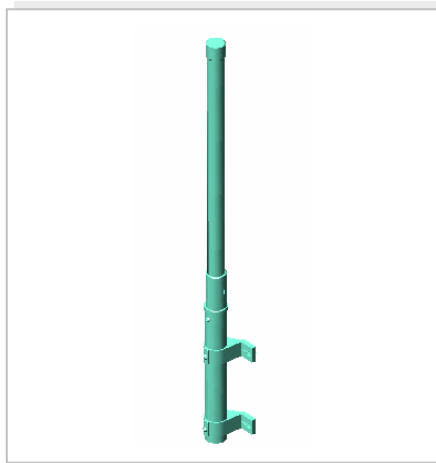
## Mechanical Specifications:

Connector :	N Female
Operation Temp. :	-30°C ~ +60°C
Material :	Radome: Fiberglass Base: Copper Mount: Aluminum
Dimension (L*W*H) :	405*28Ø mm
Weight :	380g ± 20g (w/ mount)
Color :	White



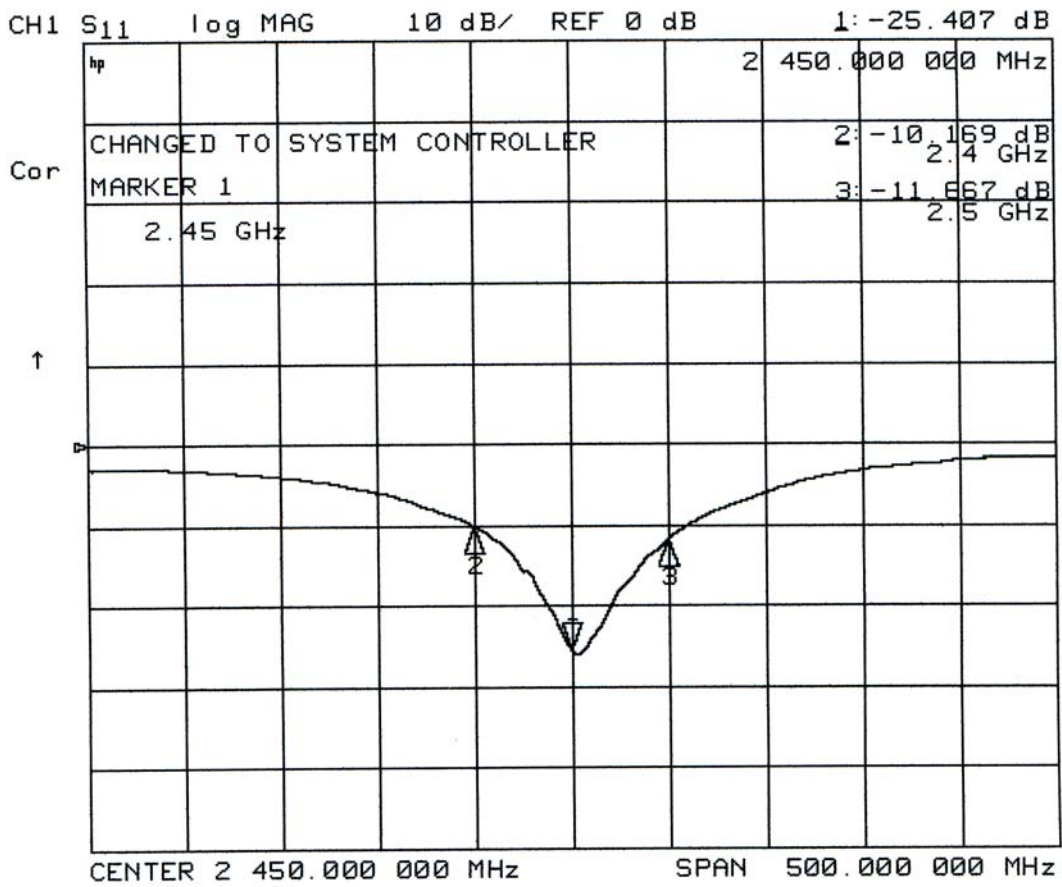
**PRO-CELL CO., LTD.**

**3D Illustration**





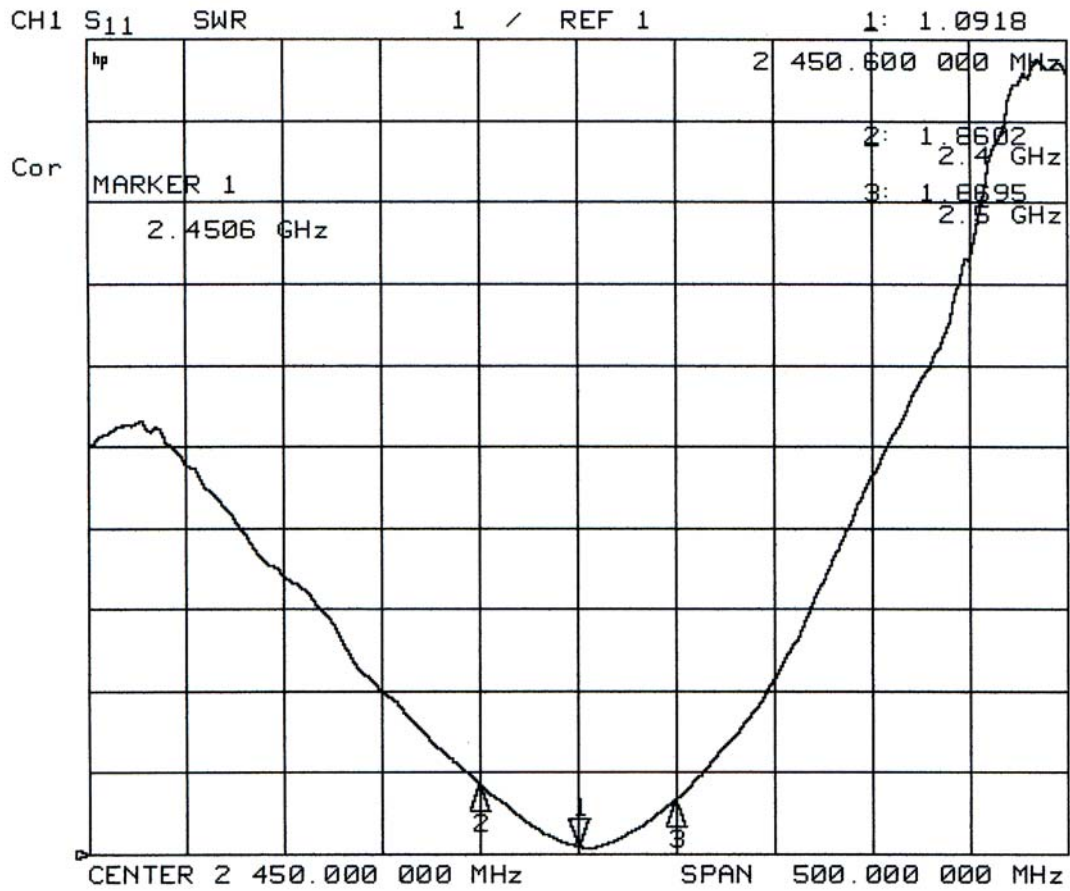
**RETURN LOSS**





# PRO-CELL CO., LTD.

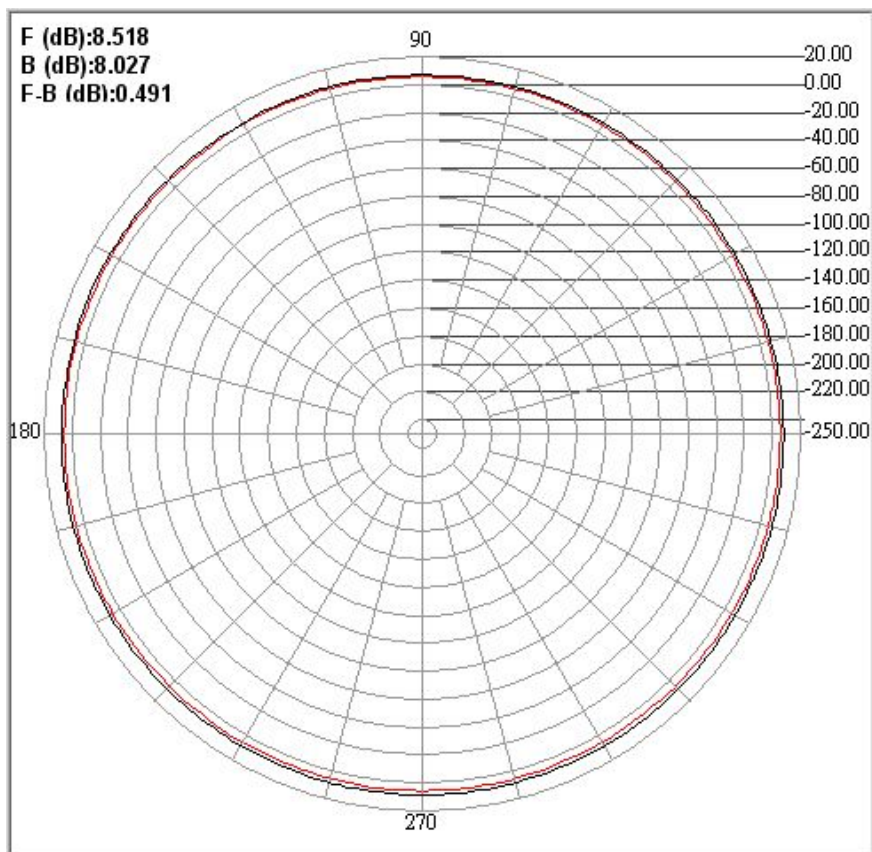
## SWR





**PRO-CELL CO., LTD.**

**H-PLANE**





**PRO-CELL CO., LTD.**

**E-PLANE**

