



PRO-CELL CO., LTD.

DATA SHEET

Customer :

Model No. : PA2D-Q02

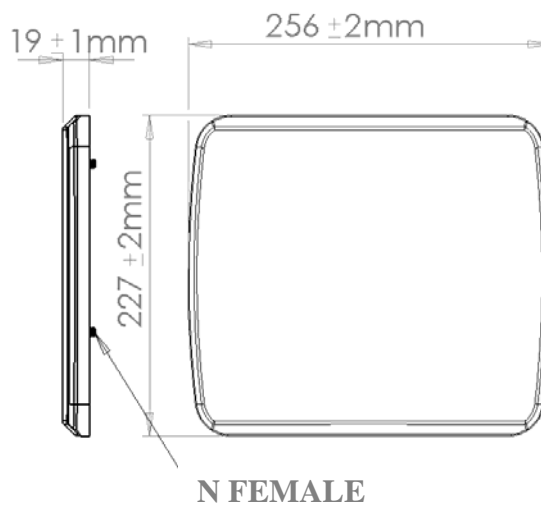
**Description : 2.4 GHz PANEL DUAL
POLARIZATION ANTENNA**

Date : 2009/11/20

Rev : 1



1. OVERVIEW & SPECIFICATIONS



Electrical Specifications:

Frequency Range :	2.4GHz
VSWR :	≤ 2.0
Impedance :	50Ω ± 5Ω
Gain :	13dBi
Polarization :	Dual polarization
Power Handling :	10 Watt

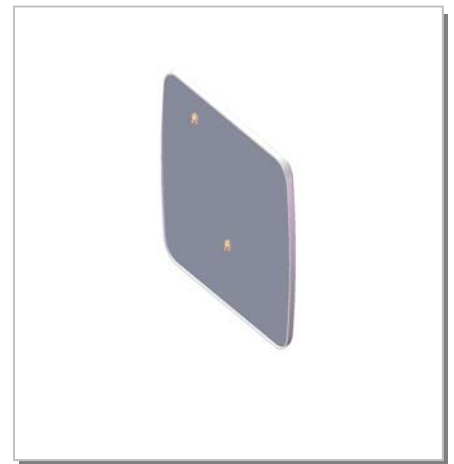
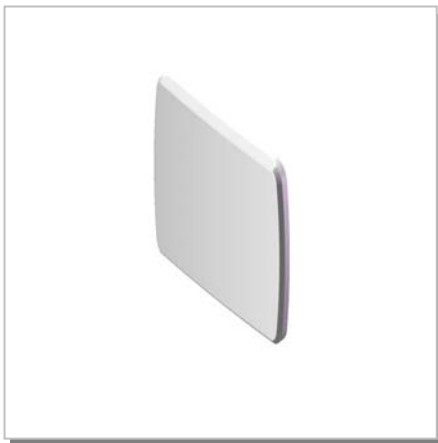
Mechanical Specifications:

Connector :	N FEMALE
Operation Temp. :	-30°C ~ +60°C
Material :	Radome: Aluminum Mount: Plating Zinc Iron Plate Radome: ABS
Dimension (L*W*H) :	256*227*19 mm
Weight	435g ± 10g (w/ mount)
Color	GRAY



PRO-CELL CO., LTD.

3D Illustration



PRO-CELL CO., LTD. No.6, Lane 133, Sec.1, Guo-Ji Road, Ta-yuan Hsiang, Taoyuan, Taiwan. R.O.C.

Tel: +886-3-3858288

Fax: +886-3-3858289

E-mail: sales@antenna.com.tw

<http://www.antenna.com.tw>



2. TESTING CONDITION

2.1 TEST SETUP

VSWR measurement (S11): Use ROHDE & SCHWARZ ZV8 Network Analyzer with Harbour RG-142 coaxial cable: 1000mm length in free space.

2.1.1 VSWR

The table as below summarizes concern about Return loss measurement according to The frequency band is based on PRO-CELL design. The detail be shown as appendix that is from ROHDE & SCHWARZ ZV8 Network Analyzer

	VSWR Performance (port 1)		
Freq(MHz)	2300	2400	2450
Free space	2.2	1.4	1.3
Freq(MHz)	2500	2600	2700
Free space	1.3	1.2	2.2

	VSWR Performance (port 2)		
Freq(MHz)	2300	2400	2450
Free space	1.9	1.5	1.6
Freq(MHz)	2500	2600	2700
Free space	1.7	2.0	1.8



3. GAIN MEASUREMENT

3.1 TEST SETUP

The gain of the antenna was measured by **PROCELL** Chamber. The chamber provides less than -30 dB reflectivity from 800 MHz through 6 GHz and a 60cm diameter spherical quiet zone. The measurement results are calibrated using both **SCHWARZBECK** horn standards. A decoupling sleeve is used to reduce feed line radiation

3.2 TEST RESULT

The peak gain is picked up as table list from Network analyzer in Chamber room, the completely gain plots also be shown as appendix.

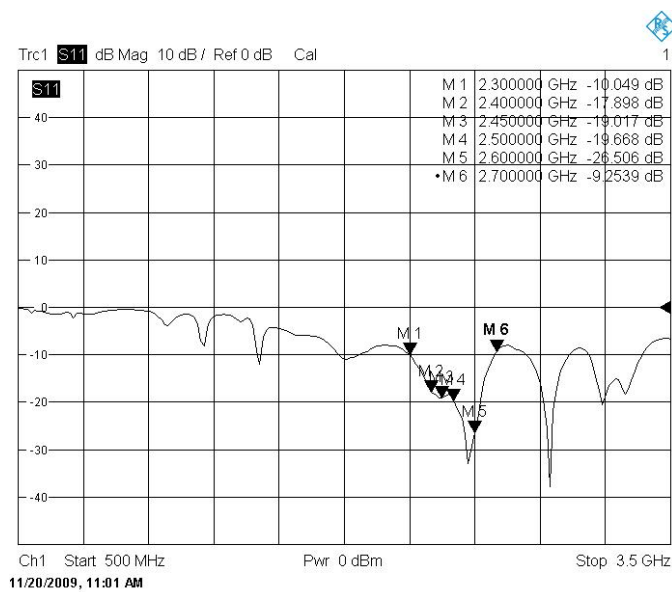
	Peak Gain (dBi)		
Freq(MHz)	2300	2400	2450
H PLANE(port 1)	12.85	12.83	13.21
H PLANE(port 2)	12.46	11.71	11.79
Freq(MHz)	2500	2600	2700
H PLANE(port 1)	12.65	12.09	11.96
H PLANE(port 2)	11.86	11.47	10.0



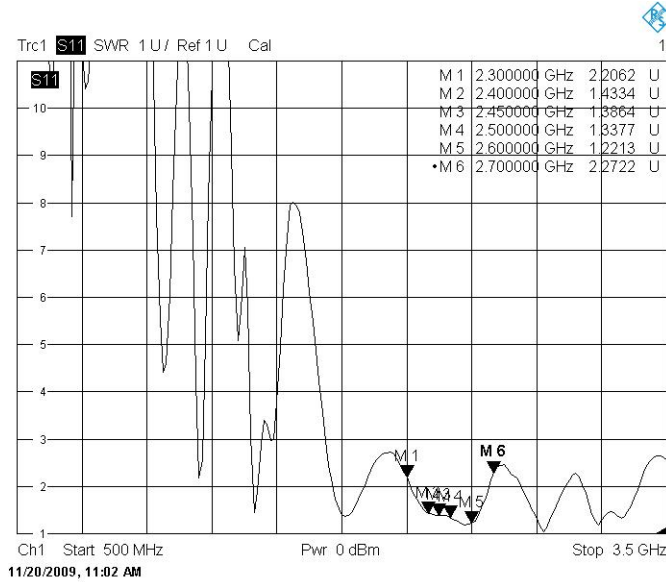
4. APPENDIX

4.1 RETURN LOSS & VSWR

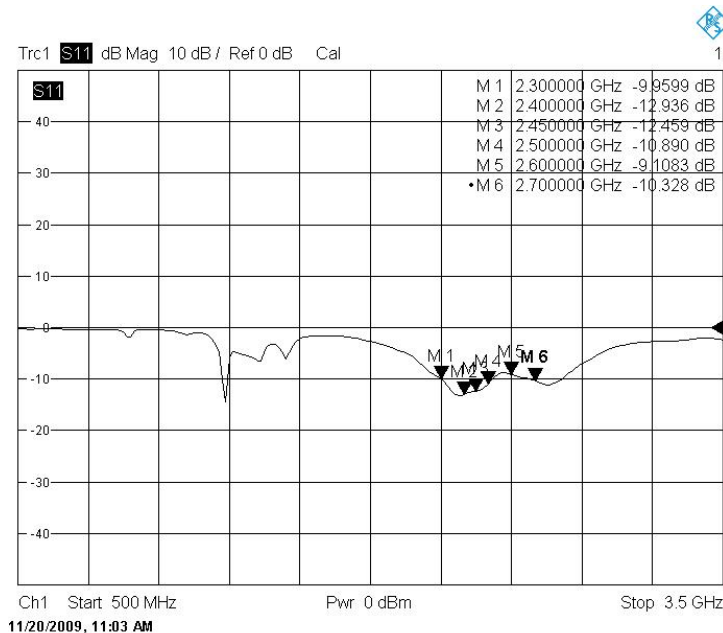
RETURN LOSS (port 1)



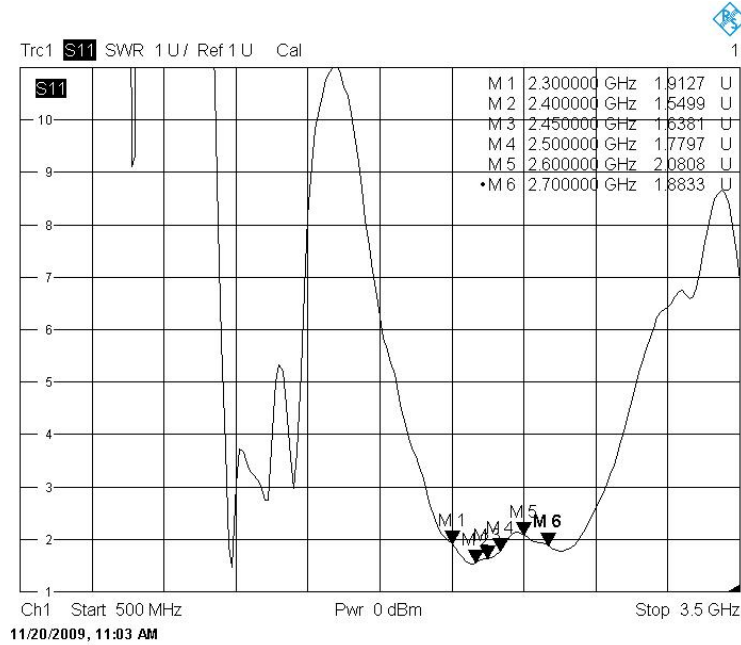
SWR (port 1)



RETURN LOSS (port 2)



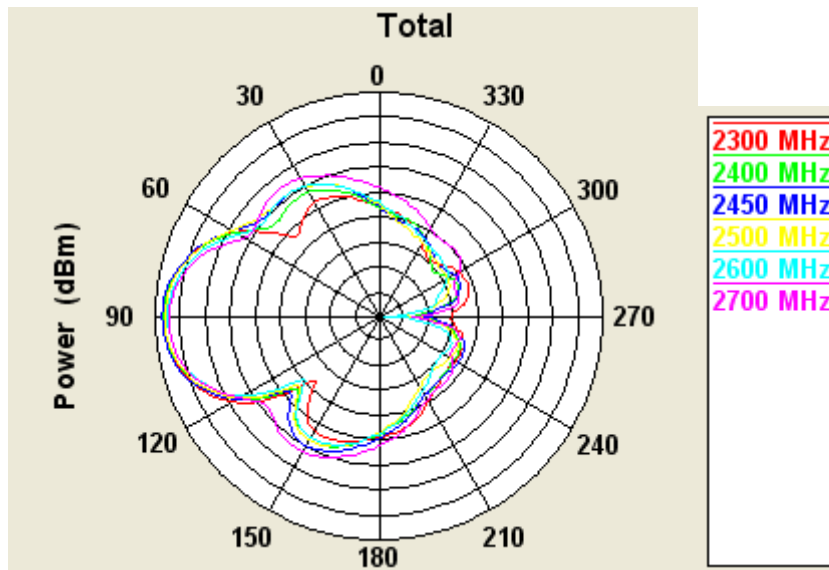
SWR (port 2)



4.2 RADIATION PATTERN

H-PLANE (port 1)

Gain Total



H-PLANE (port 2)



Gain Total

